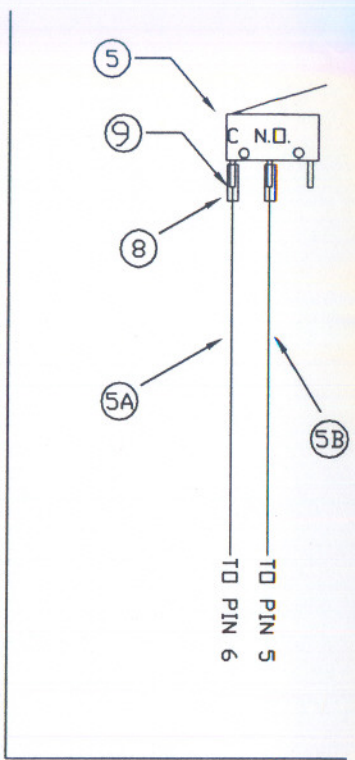
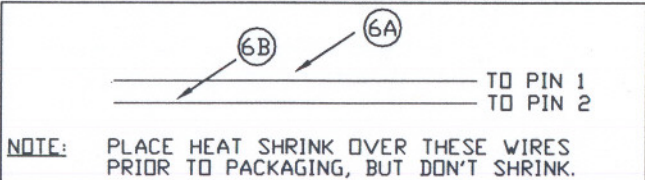
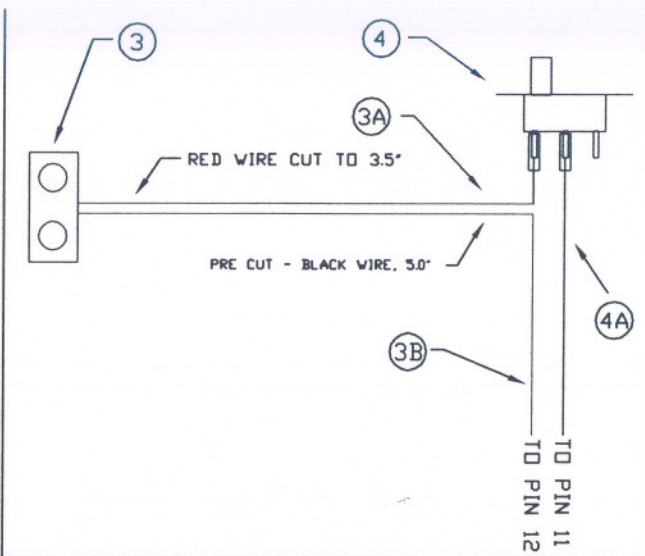


STEP 1 POSITION LEAD SO THAT SHORT LEAD IS FOUND.

STEP 2 TRIM LED LEADS DOWN TO INDICATED MARK ON THE LED.

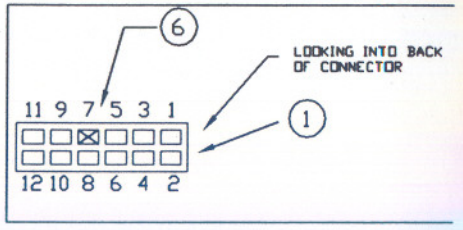
STEP 3 A) SOLDER WIRE #2A TO TOP LED PIN  
 B) SOLDER WIRE #2B TO BOTTOM LED PIN (NOTE, THIS WAS THE SHORT LEAD PIN)  
 C) PLACE HEAT SHRINK PEICES OVER SOLDER CONNECTIONS, AND SHRINK.  
 D) PLACE BLK LED HOLDER ON LED #(351-0003)



ITEM #	PART #	DESCRIPTION	QTY	LENGTH
1	69307-012	FEMALE 2X6 2MM RECEPTACLE	1	N/A
2	LTL-307G	GRN T-1-3/4 LED	1	N/A
3	12BC095	9 VOLT, T-STYE BATTERY CLIP, 5 INCHES LONG	1	5.0"
4	10SM007	SLIDE ON/OFF SWITCH	1	N/A
5	D2F-L	HINGE TYPE, SNAP ACTION SWITCH	1	N/A
6	69316-001	POLARIZATION PLUG	1	N/A
7	77138-001	Berg female pins, or equivalent	8	NOT SHOWN
8	0890-0790	3/64 HEAT SHRINK	8	.1875 EA.
9		solder both wires from WH9306 to this post		

NOTES  
 TERMINATION:  
 USE APPLICATOR "MT4053"  
 OR  
 HAND TOOL KP-339N

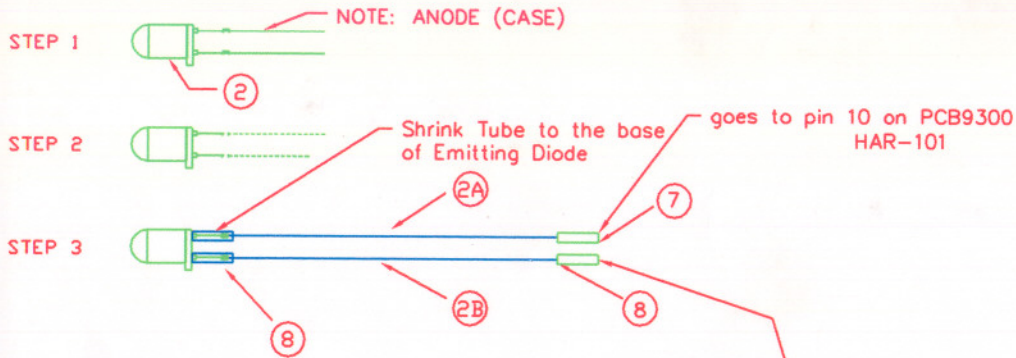
INSERT POLARIZATION PIN INTO LOCATION 7 FROM THE FRONT SIDE



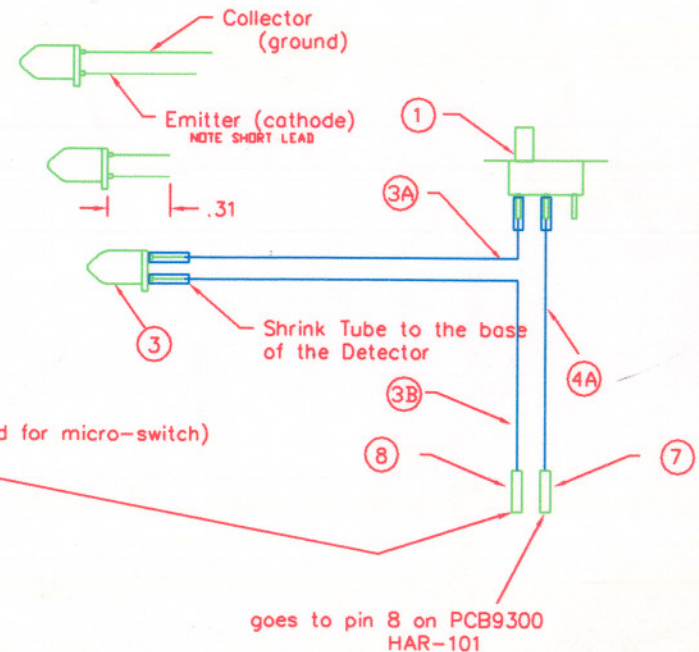
WIRE LENGTHS				
2A	8150-3136	YELLOW 28 AWG	1	2.5"
2B	8150-3138	BLUE 28 AWG	1	2.5"
3A	N/A	CUT DOWN FROM BATTERY CLIP	1	3.5"
3B	N/A	BLK, FROM BATTERY CLIP	1	5.0"
4A	8150-2399	RED 28 AWG	1	2.5"
5A	8150-3138	BLUE 28 AWG	1	2.0"
5B	8150-3136	YELLOW 28 AWG	1	2.0"
6A	8150-3138	BLUE 28 AWG	1	4.0"
6A	8150-3138	BLUE 28 AWG	1	4.0"

NOTE: WIRE LENGTHS PLUS/MINUS 1/16"

APPLY PART NUMBER TO SURFACE IDENTIFIED BY (P/N) INCLUDE REVISION.	UNLESS OTHERWISE SPECIFIED	SIGNATURES	DATE	Indian Creek Dr
FRESH: N/A	DIMENSIONS ARE IN INCHES TOLERANCES .XX +/- .015 .XXX +/- .005 .XXXX +/- .001 FRACTIONS +/- 1/16 ANGLES +/- 1/2 DEG	DRAWN: TY P.	2/1/99	TITLE
MATERIAL: N/A		CHECKED: TY P.	2/1/99	HARNESS FOR SOLEN
		ENGRG:		
		ISSUED:		SIZE D
		NEXT ASSEMBLY		DWG NO. HAR-101B
				SCALE N/A



STEP 1	Position so that orientation nub is found	Anode (case)
STEP 2	Trim leads to .31 O.A.L.	
STEP 3	A) SOLDER WIRE #2A TO TOP LED PIN B) SOLDER WIRE #2B TO BOTTOM LED PIN C) PLACE HEAT SHRINK PEICES OVER SOLDER CONNECTIONS, AND SHRINK.	



ITEM #	PART #	DESCRIPTION	QTY	LENGTH
1	10SM007	SLIDE ON/OFF SWITCH	1	N/A
2	1N6264	Fairchild infared Emitting Diode	1	
3	QSD723	Fairchild Photo Detector	1	
4	0890-0790	3/64 HEAT SHRINK	6	.50
7	77138-001	Berg female pins, or equivalent	2	
8	To be stripped, soldered and heat shrink tubed to post noted (9) on HAR-101(micro-switch)			

WIRE LENGTHS

ITEM #	PART #	DESCRIPTION	QTY	LENGTH
2A	8150-2399	YELLOW 28 AWG	1	7.0"
2B	8150-3138	BLUE 28 AWG	1	7.0"
3A	8150-2399	YELLOW 28 AWG	1	2.5"
3B	8150-3138	BLUE 28 AWG	1	6.5"
4A	8150-2399	YELLOW 28 AWG	1	4.0"

NOTE: WIRE LENGTHS PLUS/MINUS 1/16"

QTY REQ	PART	DESCRIPTION	MTL
UNLESS OTHERWISE SPECIFIED DIMENSIONS ARE IN INCHES TOLERANCES ARE: FRACTIONS DECIMALS ANGLES XX .02 XXX .005 1/2"			
MATERIAL		DATE	INDIAN CREEK DESIGN, Inc.
DRAWN J DOBBINS		4/02	
FINISH		SIZE B	Infared sensor Harness
DO NOT SCALE DRAWING		SCALE 1:1	DWG. NO. WH9306 REV. A
			SHEET 1 OF 1